

HARRY CHARLES

Property Specialists



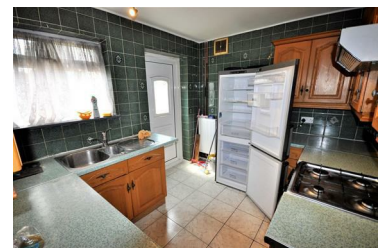
The Harebreaks, Watford, WD24 6NF

£1,850 Per month



**** THREE BEDROOM TERRACED FAMILY HOME - ENTRANCE HALL - 2 SEPARATE RECEPTION ROOMS - KITCHEN - UNDERSTAIRS STORAGE - THREE BEDROOMS - FAMILY BATHROOM- REAR GARDEN WITH PERMANENT SHED - DRIVEWAY TO THE FRONT - COUNCIL TAX BAND C - AVAILABLE 4TH JULY **** We are delighted to offer for let on an unfurnished basis this three bedroom terraced family home situated on The Harebreaks in North Watford. The property has been subject to some re-decoration and new carpets have been fitted to the stairs, landing and bedrooms. To the rear is a garden with a permanent shed and there is a driveway to the front providing off road parking. In order to arrange an early appointment to view, please contact us without further delay.

- Mid Terraced Family Home
- 2 Separate Reception Rooms
- 3 Bedrooms
- Rear Garden
- Driveway To Front
- Entrance Hall
- Kitchen
- Bathroom
- Council Tax Band C
- Available 4th July



Additional Information

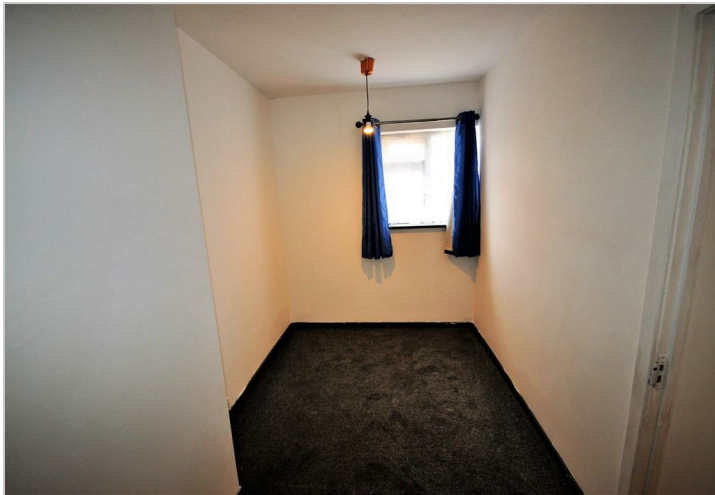
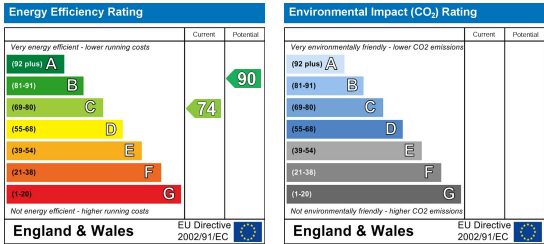
Parking

For viewings please note that there is un-restricted on road parking on the road.

Area Map



Energy Efficiency Graph



These particulars, whilst believed to be accurate are set out as a general outline only for guidance and do not constitute any part of an offer or contract. Intending purchasers should not rely on them as statements of representation of fact, but must satisfy themselves by inspection or otherwise as to their accuracy. No person in this firms employment has the authority to make or give any representation or warranty in respect of the property.